

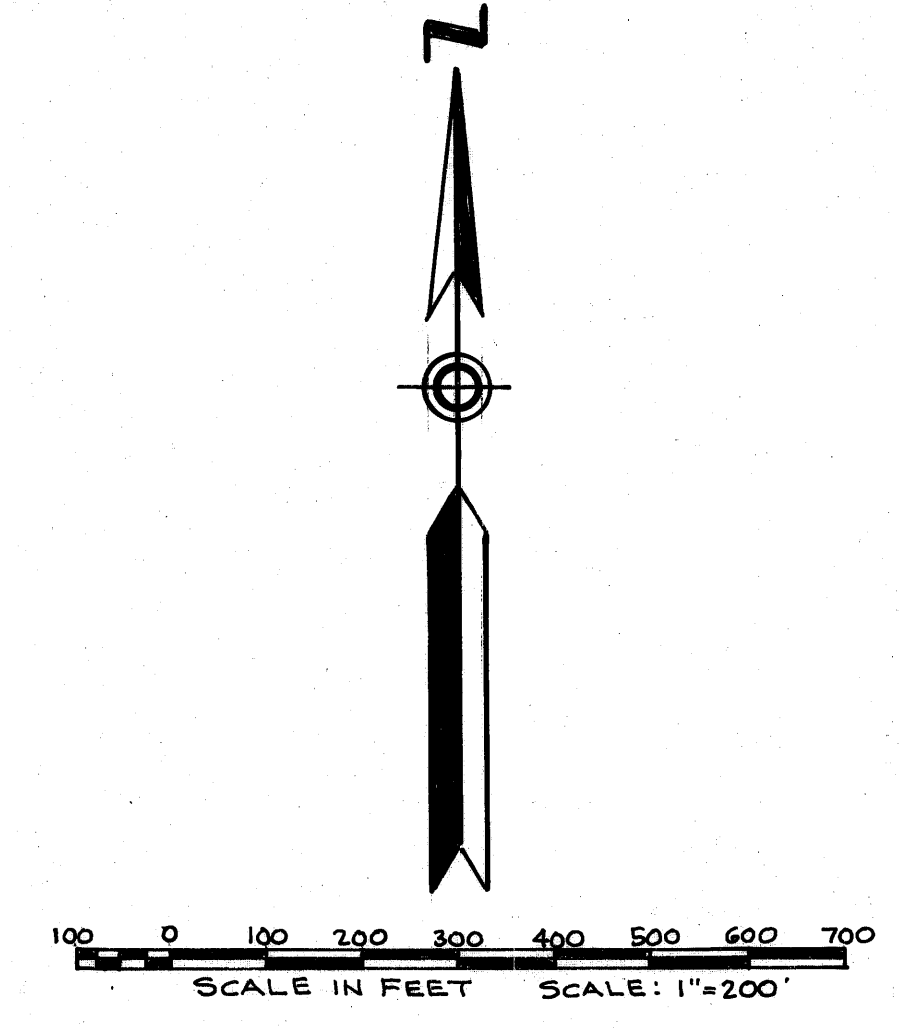
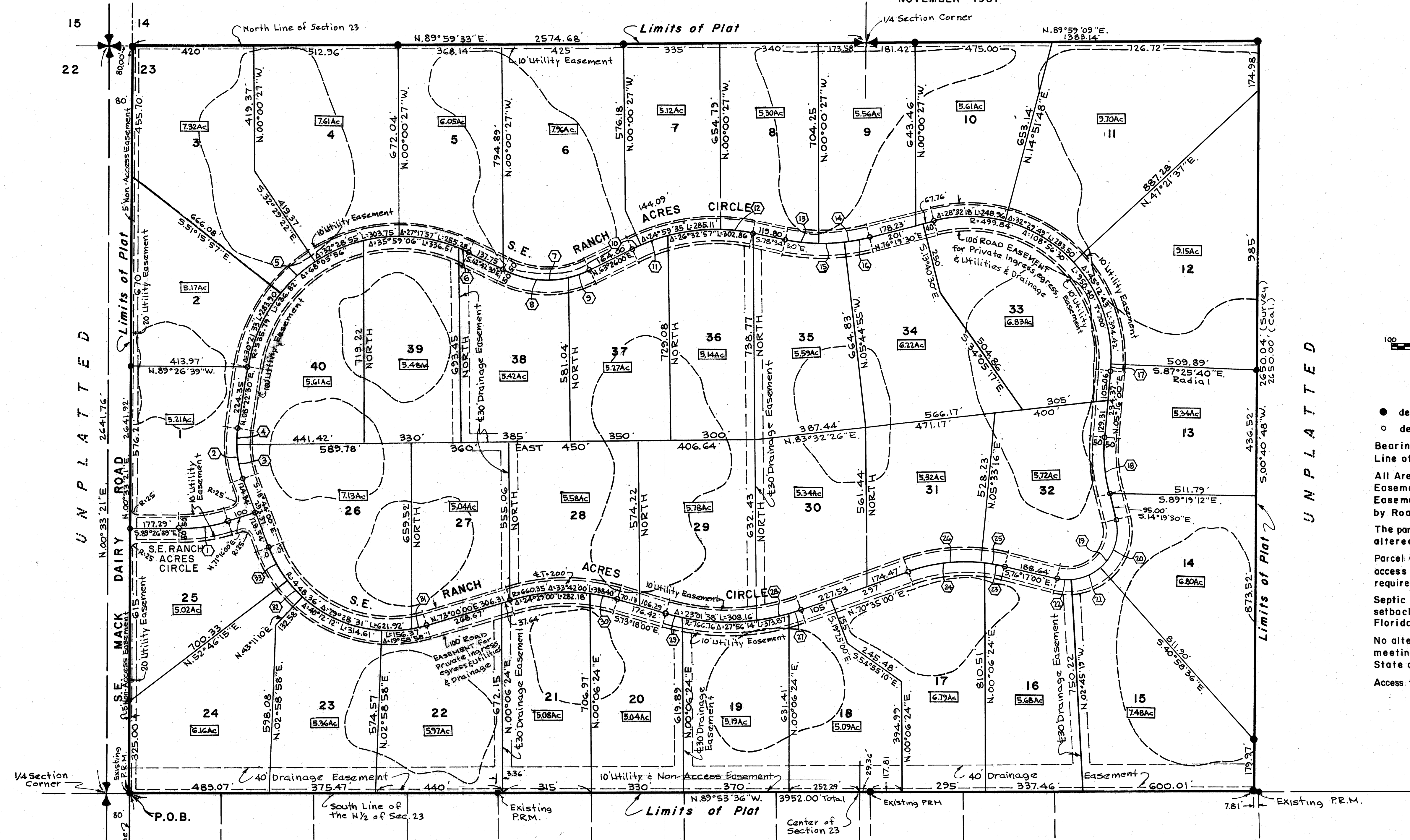
# RANCH ACRES

IN PART OF N1/2 OF SEC. 23, TWP. 40S., RGE. 41E.  
MARTIN COUNTY, FLORIDA

GEE & JENSON  
ENGINEERS, ARCHITECTS, PLANNERS, INC.  
WEST PALM BEACH, FLORIDA  
NOVEMBER 1981

UNPLATTED

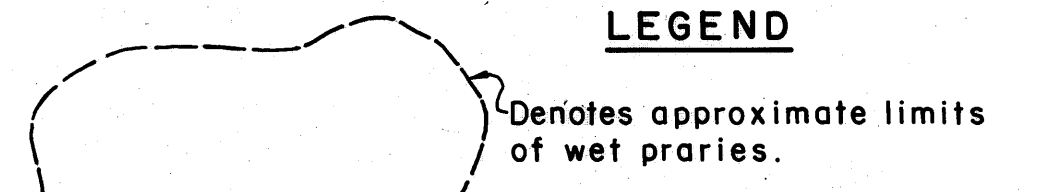
**SHEET 2 OF 2**  
I, LOUISE V. ISAACS, Clerk of the CIRCUIT COURT of MARTIN COUNTY, FLORIDA, HEREBY CERTIFY that this PLAT was FILED for RECORD in PLAT BOOK 9 PAGE 25, MARTIN COUNTY, FLORIDA, PUBLIC RECORDS, this day of \_\_\_\_\_, 1983.  
LOUISE V. ISAACS  
CLERK of the CIRCUIT COURT  
MARTIN COUNTY, FLORIDA  
By: \_\_\_\_\_  
Deputy Clerk  
FILE NO. \_\_\_\_\_



### NOTES

- denotes Permanent Reference Monument.
  - denotes Permanent Control Point.
- Bearings shown herein are relative to the South Line of Section 23 bearing N.89°46'06"W.
- All Areas within Plat Limits shown as Roads are Easements. There shall be a 5 foot Utility Easement adjacent to all parcel lines not affected by Road Easements except where otherwise shown.
- The parcels as shown will not be subdivided or altered except to make larger parcels.
- Parcel Owners will be responsible for providing driveway access to the parcel interiors in accordance with drainage requirements obtained from Martin County.
- Septic Tanks provided by Owners must have a minimum setback from Season Ponds of at least 50 feet per Florida Administrative Code, Chapter 10D-6.
- No alteration of wet praries shall be done without meeting the requirements of all applicable Federal, State and Local Government Regulations.
- Access to parcels shall be from S.E. Ranch Acres Circle only.

### LEGEND



CURVE DATA		COLONY		PARK		P.B.		P.G.	
Curve Number	Location	Curve Number	Location	Curve Number	Location	Curve Number	Location	Curve Number	Location
1	516.13	1	516.13	1	516.13	1	516.13	1	516.13
2	373.72	2	373.72	2	373.72	2	373.72	2	373.72
3	373.72	3	373.72	3	373.72	3	373.72	3	373.72
4	373.72	4	373.72	4	373.72	4	373.72	4	373.72
5	535.79	5	535.79	5	535.79	5	535.79	5	535.79
6	535.79	6	535.79	6	535.79	6	535.79	6	535.79
7	334.67	7	334.67	7	334.67	7	334.67	7	334.67
8	334.67	8	334.67	8	334.67	8	334.67	8	334.67
9	334.67	9	334.67	9	334.67	9	334.67	9	334.67
10	653.60	10	653.60	10	653.60	10	653.60	10	653.60
11	653.60	11	653.60	11	653.60	11	653.60	11	653.60
12	653.60	12	653.60	12	653.60	12	653.60	12	653.60
13	673.82	13	673.82	13	673.82	13	673.82	13	673.82
14	673.82	14	673.82	14	673.82	14	673.82	14	673.82
15	673.82	15	673.82	15	673.82	15	673.82	15	673.82
16	673.82	16	673.82	16	673.82	16	673.82	16	673.82
17	673.82	17	673.82	17	673.82	17	673.82	17	673.82
18	673.82	18	673.82	18	673.82	18	673.82	18	673.82
19	673.82	19	673.82	19	673.82	19	673.82	19	673.82
20	673.82	20	673.82	20	673.82	20	673.82	20	673.82
21	673.82	21	673.82	21	673.82	21	673.82	21	673.82
22	673.82	22	673.82	22	673.82	22	673.82	22	673.82
23	673.82	23	673.82	23	673.82	23	673.82	23	673.82
24	673.82	24	673.82	24	673.82	24	673.82	24	673.82
25	673.82	25	673.82	25	673.82	25	673.82	25	673.82
26	673.82	26	673.82	26	673.82	26	673.82	26	673.82
27	673.82	27	673.82	27	673.82	27	673.82	27	673.82
28	673.82	28	673.82	28	673.82	28	673.82	28	673.82
29	673.82	29	673.82	29	673.82	29	673.82	29	673.82
30	673.82	30	673.82	30	673.82	30	673.82	30	673.82
31	673.82	31	673.82	31	673.82	31	673.82	31	673.82
32	673.82	32	673.82	32	673.82	32	673.82	32	673.82
33	673.82	33	673.82	33	673.82	33	673.82	33	673.82
34	673.82	34	673.82	34	673.82	34	673.82	34	673.82
35	673.82	35	673.82	35	673.82	35	673.82	35	673.82
36	673.82	36	673.82	36	673.82	36	673.82	36	673.82
37	673.82	37	673.82	37	673.82	37	673.82	37	673.82
38	673.82	38	673.82	38	673.82	38	673.82	38	673.82
39	673.82	39	673.82	39	673.82	39	673.82	39	673.82